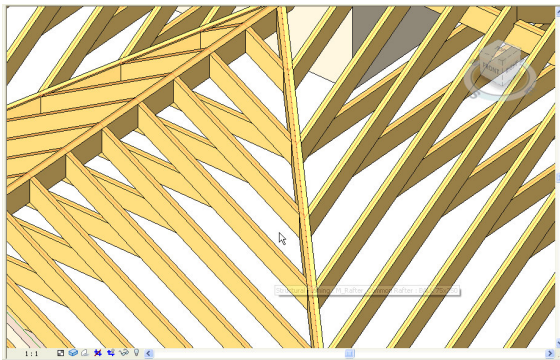
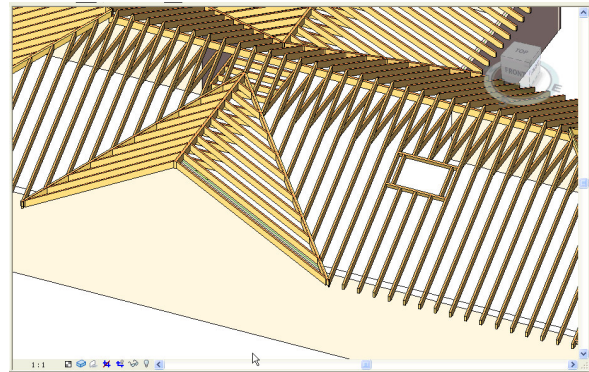


Rafter+

Rafter+ application for Revit® Architecture and Revit® Structure provides a set of tools for roof wood framing.

Supports metric and imperial unit systems
Available in different languages

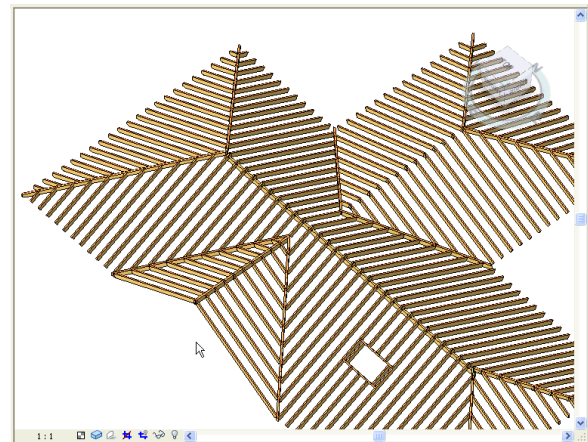
Rafter+ application provides the set of tools for roof wood framing and elements scheduling. Work is based on final 3D roof model. Common rafter systems (incl. jack rafters) for selected roof are automatically generated on all slopes.



All you need for creating hip/valley rafter – just do selection of two neighbor slopes. Rafter+ detects whether the element is a hip or a valley rafter.

Software automatically generates a collar beam system between two selected rafters in opposite roof slopes. Vertical distance from a ridge or a level to the collar beam system can be predefined and edited later. Collar beams can be created on each side of a rafter pair.

Ridge and girder beams can be easily modeled with control of notch in (BIRD'S-MOUTH) parameters of common, jack, hip and valley rafters. Vertical or horizontal distance to the girder beam can be redefined. Existing rafters can be cut immediately or later with a special update function. Update helps to edit and change parameters of modeled rafter or beam systems.



More information: www.tools4revit.com