

## Autodesk 2010 products: Optimum speed “tweaks” for Windows XP

In order to ensure you are optimizing your Revit software performance, here are six top ‘tweaks’ for Windows XP that will remove any unnecessary resources from your hardware and optimize your speed and memory.

### Top 6 “tweak” list :

#### 1. Service pack 3 for windows XP

- Download and install Service Pack 3 from the Microsoft website, follow this link:  
<http://www.microsoft.com/downloads/details.aspx?FamilyId=68C48DAD-BC34-40BE-8D85-6BB4F56F5110&displaylang=en>
- Open Service Pack 3 file and click next until complete.

#### 2. Tune-Up Utilities

- Download and install Tune-Up utilities from the following link:  
<http://www.tune-up.com/products/tuneup-utilities/>
- Once installed open the program and click “One-click Maintenance”
- This will clean up all unnecessary files and folders.
- Please note, this may take up to an hour to complete depending on severity of the unwanted files and folders.

#### 3. 3G Switch- Enabling the 3G RAM Switch- If your machine has 4GB of RAM

- Right-click My Computer. Click Properties.
- In the System Properties dialog box, click the Advanced tab.
- On the Advanced tab, under Startup and Recovery, click Settings.
- In the Startup and Recovery dialog box, under System startup, click Edit.
- The Windows *boot.ini* file will be opened in Notepad.
- Save a renamed copy of your *boot.ini* file somewhere on your computer in case you need to revert back to your original version of the file. **Note:** *Boot.ini* files may be different from computer to computer.

-Highlight the following line in the *boot.ini* file:

multi(0)disk(0)rdisk(0)partition(2)\WINDOWS="Microsoft Windows XP Professional" /fastdetect

-Copy (Ctrl-C) and paste (Ctrl-V) the line just below the original. **Note:** Your exact text string may be different from the text string in this document. So be sure to copy the text string from your *boot.ini* file, not the text string shown here.

-Modify the copied line to include " /3GB", as shown in the example below. **Note:** Do not overwrite any existing lines.

multi(0)disk(0)rdisk(0)partition(2)\WINDOWS="Microsoft Windows XP Professional 3GB" /3GB /fastdetec

-Save the *boot.ini* file and close Notepad.

-Click OK to close each dialog box.

-Reboot your computer.

-During startup, select the 3GB option. If you do not select the 3GB option, the system will default to the 2GB total memory setting.

If there are problems at startup, you may need to update some of your drivers.

**Verifying that the 3GB switch is enabled:**

Start a Revit session, and then open the new journal text file that was created. The Journals folder can usually be found in the *C:\Program Files\Autodesk Revit Building X\Journals* directory. **Note:** Revit Building is used as an example. If you are using Revit Structure, the folder will be named "Revit Structure." If you are using Revit Systems, the folder will be named "Revit Systems." Near the beginning of the journal, check to make sure that the TotalVirtualMemorySize equals approximately 31456000.

**4. Stop unnecessary services**

-Click Start

-Click Control Panel

-Click Administrative Tools

-Open Services and apply the following changes to the specific service name

<u>Service Name</u>	<u>Change</u>
<u>Distributed Link Tracking Client</u>	Manual *
<u>Error Reporting Service</u>	Disabled *

<u>Help and Support</u>	Manual *
<u>Indexing Service</u>	Disabled *
<u>Logical Disk Manager</u>	Manual *
<u>Net Logon</u>	Disabled *
<u>NetMeeting Remote Desktop Sharing</u>	Disabled *
<u>Network Provisioning Service</u>	Disabled *
<u>Portable Media Serial Number Service</u>	Disabled *
<u>QoS RSVP</u>	Disabled *
<u>Remote Desktop Help Session Manager</u>	Disabled *
<u>Remote Registry</u>	Disabled *
<u>Secondary Logon</u>	Disabled *
<u>Smart Card</u>	Disabled *
<u>TCP/IP NetBIOS Helper Service</u>	Disabled *
<u>Telnet</u>	Disabled *
<u>Uninterruptible Power Supply</u>	Disabled *
<u>WebClient</u>	Disabled *
<u>Windows Time</u>	Disabled *
<u>WMI Performance Adapter</u>	Disabled *

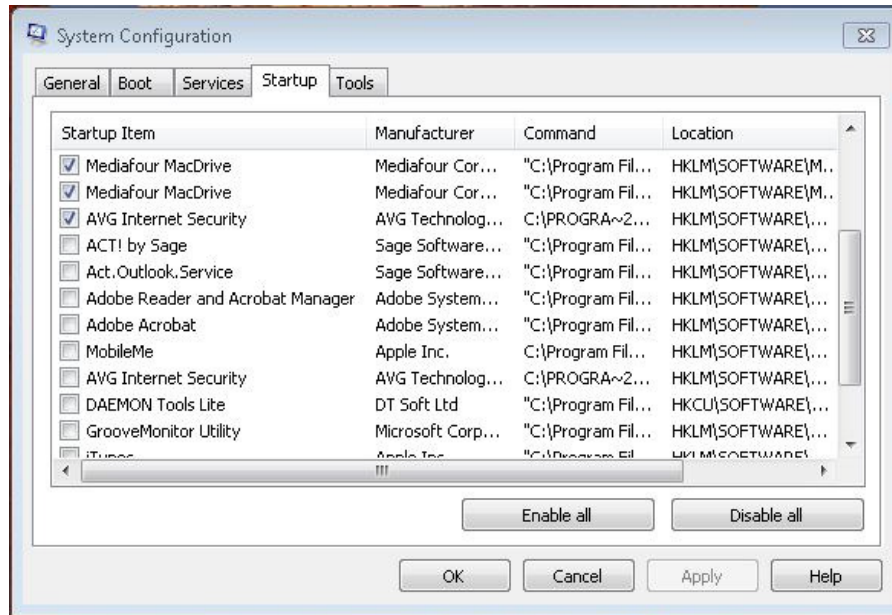
## 5. Disable Windows XP themes and adjust for Best Performance

- Click Start
- Right click on “My Computer” – select Properties
- Click on the “Advanced” Tab
- Click settings under the performance Header
- Select “Adjust for best performance”
- Click “Apply” and “Ok” and close

## 6. Disable Startup Programs

- Click Start
- Click “Run”
- Type in “msconfig” – Click run
- Click the “Startup” Tab

-You should have the following screen



- The list that will appear on your screen will be different to the above
- The most common Startup items that can be un-ticked are iTunes, Adobe Acrobat, Daemon tools, Groovemonitor Utility.
- Once done, click "Apply" and OK.